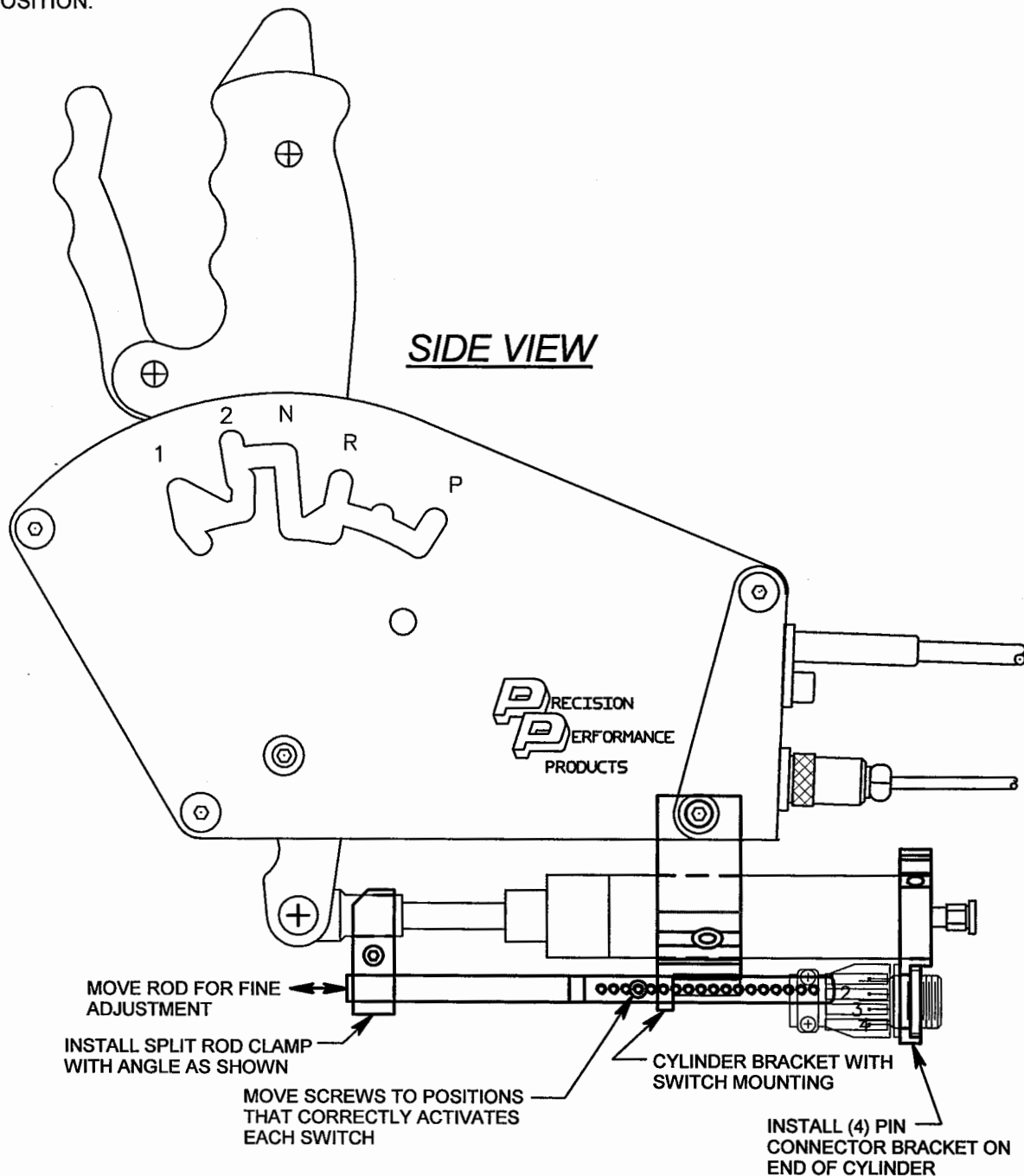


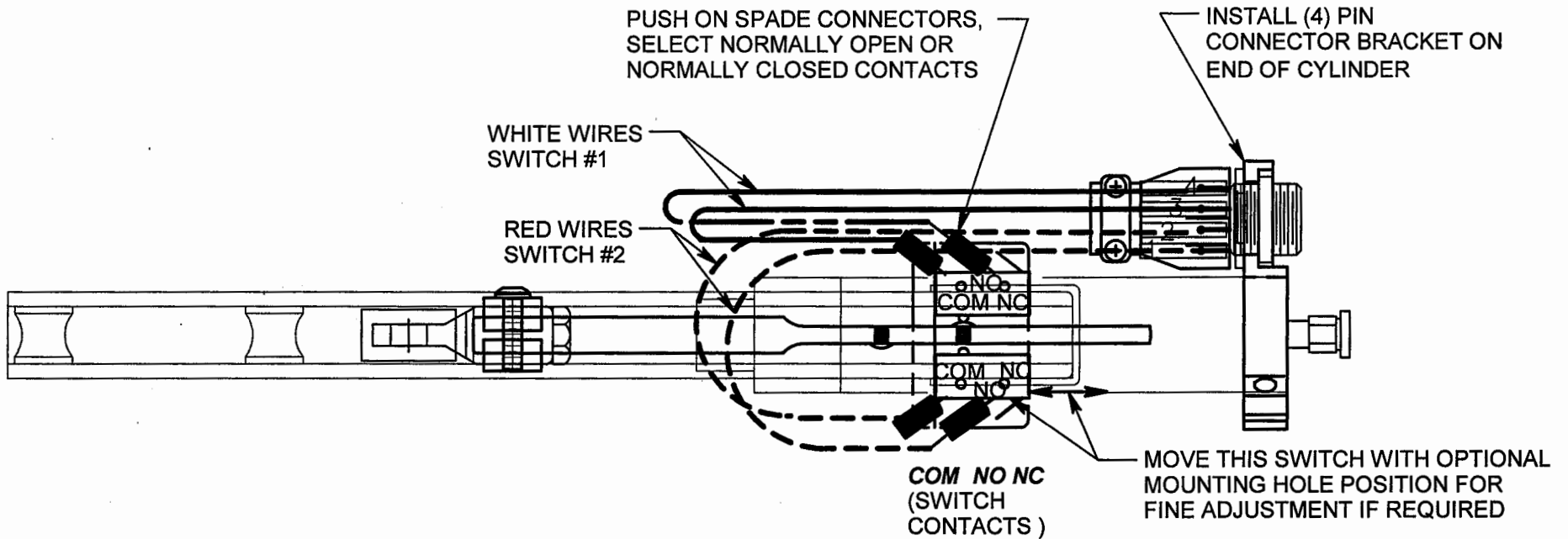
648 KS-1 POWER SHIFT(AIR) UNIVERSAL (2) SWITCH ASSEMBLY

THIS ASSEMBLY CAN BE RETROFITTED TO EXISTING POWER SHIFTERS. REPLACE THE CYLINDER CLAMP WITH THE SWITCH MOUNTING VERSION .(A SCREWDRIVER IN THE SLOT TO EXPAND THE DIAMETER IS HELPFULL). INSTALL THE SWITCH TRIGGER ROD WITH THE SPLIT CLAMP ON THE CYLINDER CLEVIS WITH THE ANGLE ON THE CLAMP AS SHOWN. THE SWITCHES CAN BE TRIGGERED BY INSTALLING THE BUTTON HEAD SCREWS IN THE APPROPRIATE HOLES TO ACCUATE EACH SWITCH IN THE DESIRED GEAR POSITION. NORMALLY **OPEN** OR NORMALLY **CLOSED** CONTACTS CAN BE SELECTED BY MOVING THE REMOVABLE SPADÉ TERMINALS. INSTALL THE (4) PIN CONECTOR BRACKET ON END OF CYLINDER AND ROTATE TO DESIRED POSITION.



SW7.vc6 4/25/07 1:1.75

648 KS-I POWER SHIFT(AIR) UNIVERSAL (2) SWITCH ASSEMBLY



BOTTOM VIEW